



**Diary Dates:**

- **Wednesday 13th 2025 Year 6 Parent Meeting Day**
- **Friday 7th February HTAFC Blue and White Foundation Day**
- **Friday 14th February ASPIRE DAY – dress up as your dream job!**
- **Friday 14th February 2:30pm FOST Bun sale**
- **Year 6 SATS Monday 12th -Thursday 15th May**



**Head Teacher's Message**



It's hard to believe we're already halfway through the half-term! A huge well done to all our pupils for their fantastic efforts so far.

Congratulations to our Golden Ticket winners who worked hard in the school garden alongside our GROW this week – your contributions are making a real difference to our school.

You will have received a letter earlier this week regarding punctuality. Thank you for your continued support in ensuring our students arrive on time and ready to learn – it really helps set the tone for a productive day.

Finally, a special shoutout to those pupils who have achieved 100 Dojos and are proudly wearing their badges with pride.

Your hard work and commitment don't go unnoticed – keep it up!

**Collective Worship**

This week, we continued on our Aspire theme. Having revisited the story of David and Goliath we talked about our own personal 'Goliaths' and overcoming barriers to our dreams and aspirations.



**FOST**

We will be holding our next bun sale in the front playground after school on Friday 14<sup>th</sup> February. Please come and support us. We would appreciate donations of buns and cakes on the Friday morning.

Thank you

**Reception**

This week the children have loved talking about space, the different planets in space and we thoroughly enjoyed making our very own rockets in the junk modelling area! We also found out that some adults work during the night when we sleep.



**Year 1**



Year 1 took their learning outdoors and had a fantastic time playing 'What Time Is It, Mr Wolf?' This fun activity was a great way to practice their counting skills while also developing their processing and quick response abilities.

## Year 2

This week Year 2 have been using Chrome Music Lab to learn about patterns in music.



## Year 3

In Year 3 this week we found out that fossils were formed over millions of years and are the remains of a once-living organism, such as a plant or animal, and that they were preserved as rock. We can study fossils to find out what life on Earth was like in prehistoric times. We have learnt that fossils are hardened minerals that filled the space that bones may have been. Here we are sequencing the events that lead to a fossil being formed.



## Year 4



This week, year 4 have been learning about solids, liquids and gases in Science. They learnt that all states of matter have particles. They practiced outside to demonstrate their understanding of each of the states. After, they drew a diagram to show what they had learned.

## Year 5

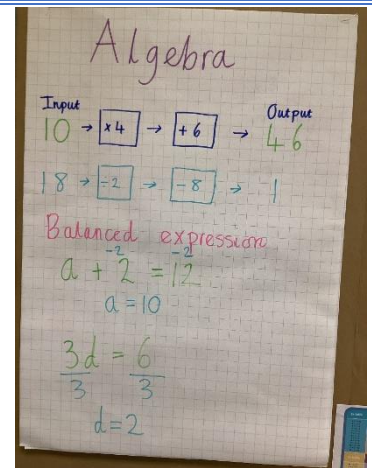


Year 5 have has a busy week! We began our puberty lessons and the children were very sensible overall.

We also tasted some seasonal fruits and vegetables in DT, reviewing them for their taste, texture, appearance and giving them a star rating!

## Year 6

Year 6 have done such an amazing job in maths this week tackling algebra. They have approached each lesson with such positivity and have survived the week, knowing much more about the subject. The best news? We're doing some more algebra lessons next week too!



## Home Visits

To ensure the safety and well-being of all our students, home visits are a key part of our attendance procedures.

Here's how it works:

### HOME VISITS



- **Day 1 Home Visit:** If a child is absent from school and we do not receive any communication from the family explaining the reason for the absence, a member of our staff will conduct a home visit on the first day of the unexplained absence. This is to confirm the child's safety and to offer any necessary support to the family.
- **Day 3 Home Visit:** For all absences, even those with an initial reason provided, we will conduct a home visit on the third consecutive day of absence. This is to ensure continued support and to check on the child's well-being.

These home visits are in line with recommended good safeguarding practices and are consistent with policies followed by other local schools. Our goal is to ensure every child's safety and to maintain clear communication with families. Thank you for your cooperation in helping us keep our school community safe.

## Attendance

Each day in school builds valuable skills, knowledge, and connections that help students thrive academically and socially. Consistent attendance strengthens routines, boosts learning, and supports a positive school experience. Let's work together to make every school day count!

Attendance Matters



Every Day Counts....

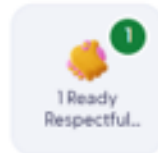


# Behaviour at St Thomas on a page

## Our 3 school rules



## Our Rewards



We get points for showing our 3 school rules in action, especially when doing our 3 school rules leads to good work and great friendships.

We draw Golden Tickets and give prizes in exchange for dojo points.



We give certificates and merits for outstanding work and conduct.



## Our Behaviour Levels

We use the same language around school for behaviour that is unacceptable: our behaviour levels.

Level 1	Level 2
<p>Checklist</p> <ul style="list-style-type: none"> <li>Interrupting the lesson</li> <li>Not on task</li> <li>Distracting other children</li> <li>Circle movement around the classroom</li> <li>Minor deliberate damage to another child's or school property</li> <li>Disrespectful attitude to another child or adult</li> <li>Not ready, respectful or safe</li> </ul>	<p>Checklist</p> <ul style="list-style-type: none"> <li>Persistent Level 1 behaviour</li> <li>Not following reasonable requests</li> <li>Deliberately not completing task set</li> <li>Behaviour that causes others distress (first instance reported)</li> <li>Bullying type behaviour (first instance reported)</li> <li>Disrespectful language and attitude to another child or adult that causes distress</li> </ul>

### Level 1

*Addressed within class*

It's behaviour that may disrupt the learning at the first stage.

### Level 2

*Addressed within class*

It's behaviour that has continued or is deliberately disrespectful.

### Level 3

*Addressed by our behaviour team*

It's behaviour that has been violent, unsafe or damaging.

### Level 4

*Addressed by our behaviour team*

It's behaviour that is the most serious and will mean time out of class or school.

Our levels are detailed in our policy.

## How we support

### Communication

We are on the door, available via email and phone. We keep our families informed.

### Adults and Rooms

We have rooms and adults who are timetabled to support our pupils and help them to thrive.  
**NEST Roots & Shoots Blossom**

### Target Cards

We help our children learn and practise the desired behaviours.



### Report Cards

A daily check on behaviour and attitude is shared with a member of our team.

